



# Our Kids. Our Tomorrow.

2018

The Commit Partnership  
Community Achievement Scorecard  
Published April 2019



Contents

- 01 Mission & Vision
- 03 2018 Scorecard
- 05 Understanding Our Community
- 07 Early Matters Dallas
- 09 Best in Class Coalition
- 11 Dallas County Promise
- 13 Advocacy
- 15 Staff, Leadership Council, & Partners
- 17 Investors & Footnotes

Our Approach



**Analyze** data and engage expertise to inform action, **activate** the community to achieve shared goals, and **grow** the capacities of education systems and stakeholders.

Our Mission and Vision

The Commit Partnership is a community navigator and connector, working to ensure that all DFW students receive an excellent and equitable education that prepares them to flourish in college and career.

A coalition of over 200 partners (public and private schools, colleges, foundations, businesses, and nonprofits), we work collaboratively to solve the region’s biggest systemic challenges.

Dear Valued Partners,

Since our founding in 2012, our Partnership has been relentlessly focused on finding the most impactful strategies to address the root causes hindering student outcomes. We work every day toward a future for North Texas in which:

- Every child can read by third grade
- Excellent educators are present in every classroom
- Every graduating senior is college and career ready

These three important goals inform the work of each of our three main coalitions: Early Matters Dallas, Best in Class, and the Dallas County Promise. These teams are dedicated to collaborating with local leaders to eliminate barriers and increase access across our region.

While it’s important to continue working within our community, we also recognize that some of the challenges we face are systemic and must be addressed on a statewide level. That’s why I was honored to serve over the past year on the Texas Commission on Public School Finance, providing recommendations that will improve the way we fund our schools across the state. Our Advocacy team has been down in Austin working hard to help ensure these new ideas become a reality.

Meanwhile, our Analytics team has been tirelessly examining the data contained within our state’s new A-F accountability system in order to identify the needs, challenges, and opportunities to grow student achievement throughout our state. Currently, almost half of our state’s students attend C-, D-, or F-rated campuses. Talent is distributed equally, but too often, resources are not.

Dallas County educates 1% of the children in this country. Texas educates 10%. What happens in our region and in the state of Texas matters greatly to the economic



health of the country. Thank you for supporting us in our mission to make our county, state, and world a better place.

**Todd Williams**  
CEO & President, The Commit Partnership

**47,009 additional Dallas County students are now achieving key benchmarks since 2012.**



Dallas County  
Cradle-to-Career  
Pipeline

With guidance from its Governing Board, Leadership Council and partners, the Commit Partnership annually measures 11 critical achievement indicators reflecting key milestones in a learner’s educational journey and helps to mobilize aligned community action to address the greatest gaps in opportunities affecting student achievement.

How the Data  
is Calculated

All Scorecard data reported is provided by the Texas Education Agency (TEA), with the exception of Postsecondary Enrollment, Postsecondary Persistence, and Postsecondary Completion, which are provided to Commit by each school district.

PRE-K  
ENROLLMENT

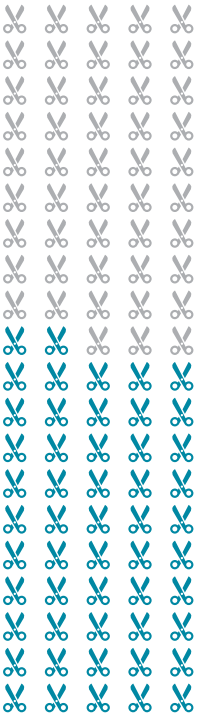


47%

+2% GAP WITH TEXAS  
25,585 STUDENTS  
MEETING BENCHMARK

Percentage of eligible 3-and-4-year-olds enrolled in public Pre-K.<sup>1</sup>

KINDERGARTEN  
READINESS



52%

+5% GAP WITH TEXAS  
15,090 STUDENTS  
MEETING BENCHMARK

Percentage of kindergarteners passing district assessments conducted within the first 60 days of the start of the school year.<sup>2</sup>

3RD GRADE  
READING



38%

-3% GAP WITH TEXAS  
14,979 STUDENTS  
MEETING BENCHMARK

Percentage of students who achieved at the meets standard (postsecondary readiness), answering at least 76% of questions correctly on STAAR.<sup>3</sup>

4TH GRADE  
MATH



43%

-4% GAP WITH TEXAS  
17,257 STUDENTS  
MEETING BENCHMARK

Percentage of students who achieved at the meets standard (postsecondary readiness), answering at least 74% of questions correctly on STAAR.<sup>3</sup>

8TH GRADE  
SCIENCE



43%

-7% GAP WITH TEXAS  
15,422 STUDENTS  
MEETING BENCHMARK

Percentage of students who achieved at the meets standard (postsecondary readiness), answering at least 71% of questions correctly on STAAR.<sup>3</sup>

ALGEBRA 1



53%

-3% GAP WITH TEXAS  
21,320 STUDENTS  
MEETING BENCHMARK

Percentage of students who achieved at the meets standard (postsecondary readiness), answering at least 58% of questions correctly on STAAR.<sup>3</sup>

COLLEGE  
READINESS



14%

-2% GAP WITH TEXAS  
4,271 STUDENTS  
MEETING BENCHMARK

Percentage of 2017 high school graduates who took and scored at or above 1110 on the SAT or 24 on the ACT.<sup>4</sup>

HIGH SCHOOL  
GRADUATION



88%

-4% GAP WITH TEXAS  
27,983 STUDENTS  
MEETING BENCHMARK

Percentage of 2013-14 9th grade cohort who started and graduated high school within four years.<sup>5</sup>

POSTSECONDARY  
ENROLLMENT

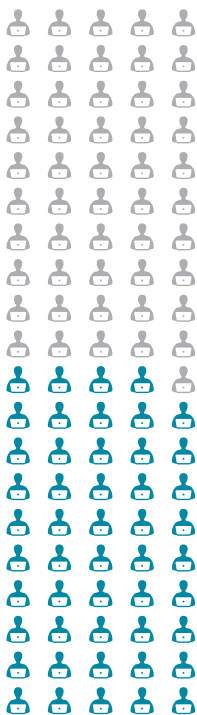


62%

18,796 STUDENTS  
MEETING BENCHMARK

Percentage of 2017 high school graduates who enrolled in a higher education institution within one year of graduation.<sup>6</sup>

POSTSECONDARY  
PERSISTENCE

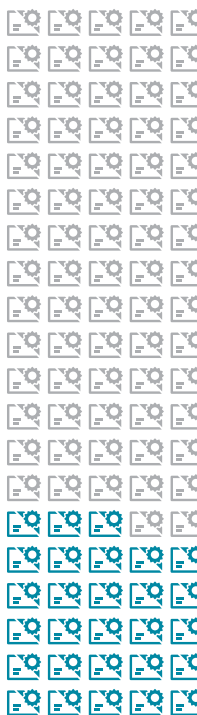


49%

14,592 STUDENTS  
MEETING BENCHMARK

Percentage of 2016 high school graduates who enrolled and then returned for a second year of higher education.<sup>7</sup>

POSTSECONDARY  
COMPLETION



28%

7,465 STUDENTS  
MEETING BENCHMARK

Percentage of 2012 high school graduates who completed a two- or four-year degree within six years of high school graduation.<sup>8</sup>

DALLAS COUNTY  
CHANGE SINCE 2012

12%

0%

3%

16%

14%

20%

0%

6%

0%

-3%

-1%

Please see page 18 for footnotes regarding the data for these indicators.

UNDERSTANDING

# Our Community

There are currently 681,537 children living in Dallas under the age of 18, of which 27.1% live in poverty. Additionally, 32% of households in Dallas County earn less than \$35,000 per year.

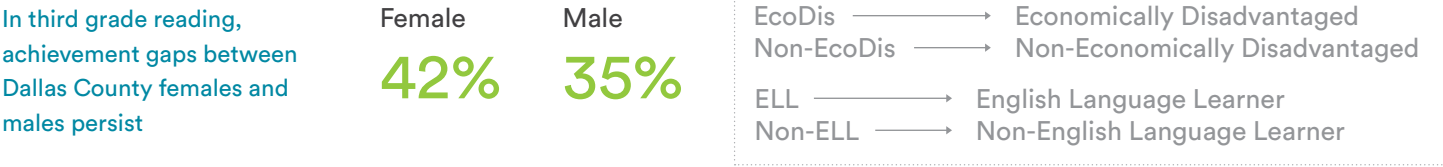
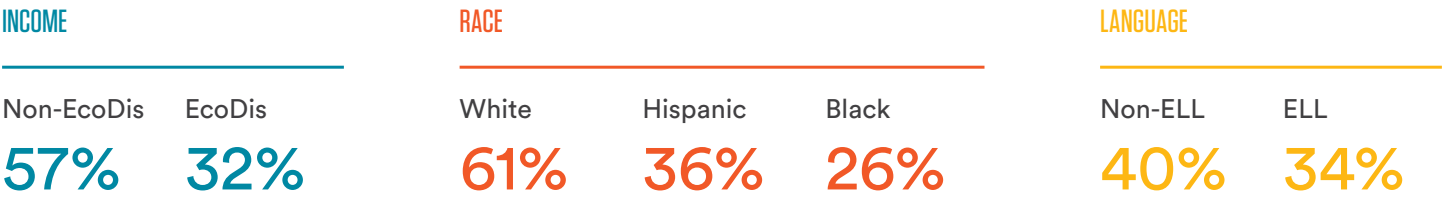
DALLAS COUNTY 2018 ACCOUNTABILITY BREAKDOWN

The A-F accountability system was designed to ensure that every Texas student master the Texas Essential Knowledge and Skills, and are provided the necessary support to do so. A grade of A-F is determined through the measurement of three domains: student achievement, school progress, and closing the gaps between different student subgroups.

TEA ACCOUNTABILITY GRADE	# OF CAMPUSES	# OF STUDENTS	% ECO. DIS.	% HISPANIC	% BLACK	% WHITE	% ASIAN
A	136	80,167	47%	43%	13%	28%	14%
B	247	181,933	72%	59%	20%	13%	5%
C	225	177,749	78%	58%	28%	8%	3%
D	79	52,154	80%	55%	33%	8%	2%
F	36	18,379	82%	53%	25%	5%	1%

While the Scorecard has tracked our 11 indicators for the past six years, the data tells a more nuanced story because it can be disaggregated. For example, take a look at two key indicators, third grade reading and college readiness. Analyzing the data this way helps ensure that strategies to improve student outcomes are reaching the students who need it the most.

STAAR THIRD GRADE “MEETS GRADE LEVEL” RATES BY DEMOGRAPHIC, 2012-2018



Dallas County high schools graduated 29,548 seniors in May 2018. Of those graduates, 18,173, or 73%, are economically disadvantaged. Only 1,300 economically disadvantaged graduates (7%) met the college ready standards on the SAT or ACT.

COLLEGE READINESS	HISPANIC	BLACK	WHITE	OTHER	ALL
Rate	7%	6%	40%	33%	14%
High School Graduates	15,484	6,876	4,611	2,677	29,548
College Ready	1,142	401	1,847	880	4,271



PRIORITY AREA: EARLY CHILDHOOD

# Early Matters Dallas

earlymattersdallas  
A Historic Coalition on Early Education

Early Matters Dallas is a broad-based coalition of business, civic, education, philanthropic and nonprofit organizations and volunteers, working together to raise awareness about, and advocate for, the importance of high quality early education for a strong economy tomorrow.

Early Matters leaders continuously advocate for increased financial resources allocated to this critical, high return-on-investment area. In partnership with Early Matters Houston and Early Matters Austin, Early Matters Dallas

works to align efforts to advocate for the children in Texas – one of three of whom live in our three regions. Quality learning environments (whether at home with supportive and nurturing families or in classroom settings) significantly improve Kindergarten Readiness, Third Grade Reading mastery, high school graduation rates, postsecondary attainment, and workforce readiness. We envision a community where high-quality early learning environments are available to all children. To achieve this vision, the Dallas community must be coordinated, intentional, and results-oriented.



An additional \$229.9 million was allocated to Texas through the Child Care Block Development Grant, leading to an additional 28,000 children across the state being served in quality child care. Early Matters Dallas and its advocacy partners' efforts ensured that additional funding was used to raise the subsidy reimbursement rates for infants, toddlers, and centers participating in the Texas Rising Star quality rating system, helping to bring greater economic stability for quality child care centers.



In 2018-19, Early Matters Dallas led a pilot with seven school districts and a 0-5 provider, Child Care Group, to pilot CLASS, a classroom observation and coaching tool that provides research-driven insights to improve how teachers interact with children every day to cultivate supportive, structured, and engaging classroom experiences. Nearly 60% (~15,000) Dallas County Pre-K students were in classrooms utilizing CLASS.

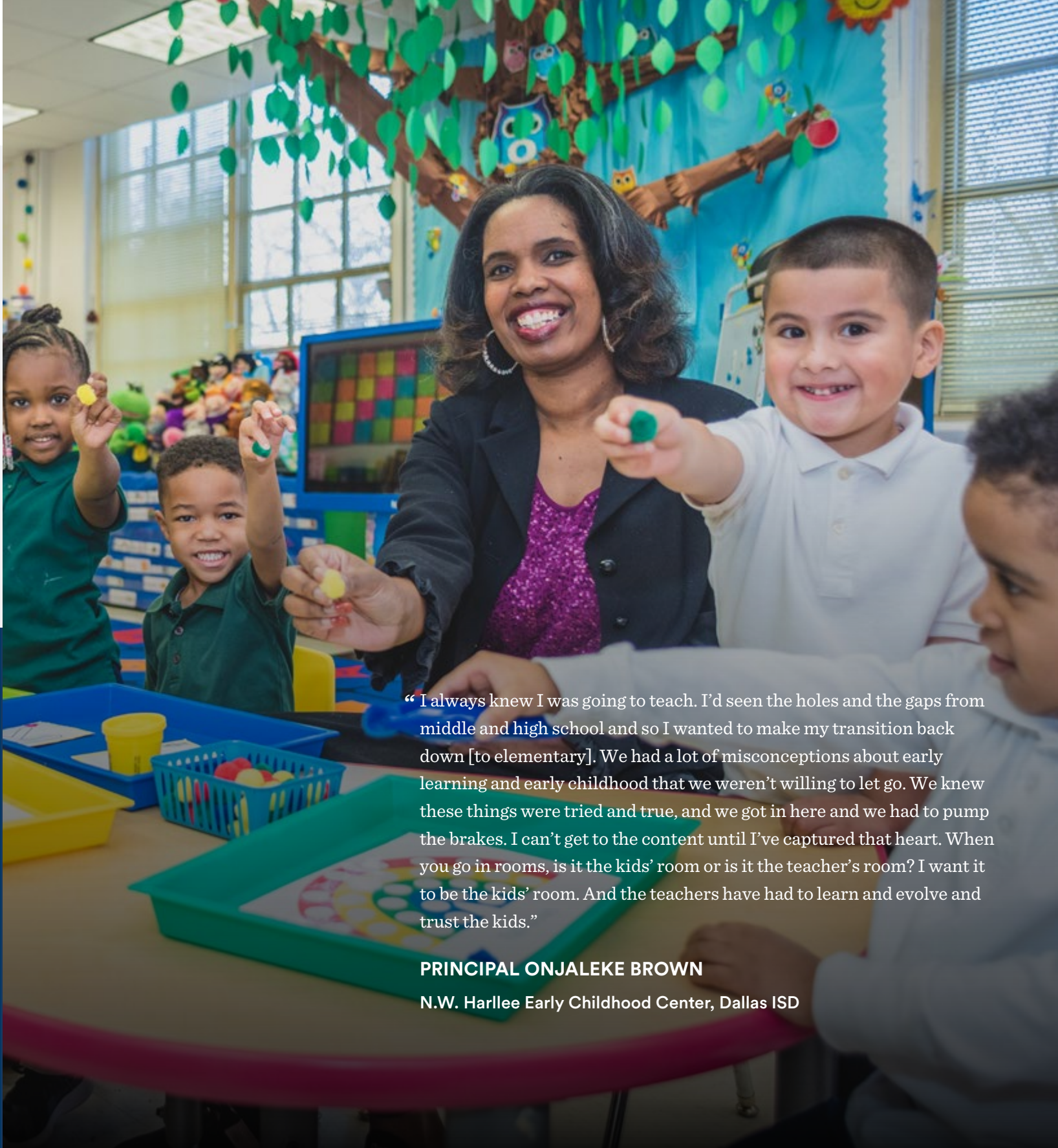


In 2018-19, nine of 14 Dallas County districts offered full-day Pre-K, with all southern Dallas districts making full-day available. In 2019-20, Richardson ISD plans to increase full-day Pre-K by an additional 594 seats.



Early Matters Dallas has contracted The Collaborative for Academic, Social, and Emotional Learning (CASEL), a national expert in socialemotional learning (SEL) to support seven school districts to create districtwide SEL strategies. At the end of this engagement, districts will have a deep knowledge of the tenets of SEL, be prepared to pilot districtwide strategies, and identify ways to measure the effects of SEL on academic outcomes.

[EarlyMattersDallas.org](http://EarlyMattersDallas.org)



“I always knew I was going to teach. I’d seen the holes and the gaps from middle and high school and so I wanted to make my transition back down [to elementary]. We had a lot of misconceptions about early learning and early childhood that we weren’t willing to let go. We knew these things were tried and true, and we got in here and we had to pump the brakes. I can’t get to the content until I’ve captured that heart. When you go in rooms, is it the kids’ room or is it the teacher’s room? I want it to be the kids’ room. And the teachers have had to learn and evolve and trust the kids.”

**PRINCIPAL ONJALEKE BROWN**  
N.W. Harllee Early Childhood Center, Dallas ISD





## PRIORITY AREA: EDUCATOR EFFECTIVENESS

# Best in Class Coalition



### Accelerating Campus Excellence:

Best in Class now supports 10 districts in their efforts to launch and implement the Accelerating Campus Excellence (ACE) program, leading to a total reach of over 17,000 students.

To date, 17 out of the 18 'Improvement Required' ACE schools have met standards, most seeing double digit gains in student achievement.



17 OF 18 ACE  
SCHOOLS IMPROVED

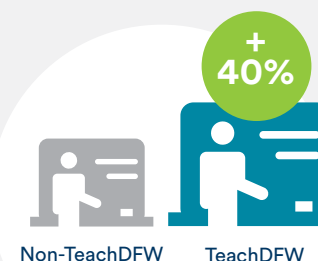


### 373 New Applications

67% - People of Color

Partner teacher preparation programs saw at least 373 new applications submitted by TeachDFW.org users, with 67% of candidates identifying as people of color.

For the four teacher prep programs we worked most closely with, TeachDFW users were 40% more likely to complete an application that they started than non-TeachDFW users, increasing the total number of applications to those programs by 13%.



“I can come into my classroom and do whatever is necessary to get my kids where they need to be, whether it’s using positive affirmations or getting them to understand data, because whenever I go to meetings, my administration is doing the same thing. How can you not put in that kind of commitment when the people above you are putting in that kind of commitment? We take ownership over what we’re doing in the classroom to grow them. And then our students take ownership. Whatever we give them, they’re just basic tools that allow them to see success — and see themselves. They set themselves up for success.”

**DANI ALEXANDER**

Accelerating Campus Excellence (ACE)  
Teacher at C.F. Carr Elementary, Dallas ISD

The Best in Class Coalition is a local initiative focused on increasing access to well-prepared, effective, diverse educators so that a greater proportion of our region’s students can be on track for college and career success. A unique partnership between Communities Foundation of Texas and Commit, Best in Class has over 50 educational entities committed to this goal, including school districts, educator preparation programs, and nonprofit and philanthropic organizations. The group’s efforts are focused on four strategic parts of an educator’s pathway: attract, prepare, develop, and retain.

[BestInClass.org](https://BestInClass.org)

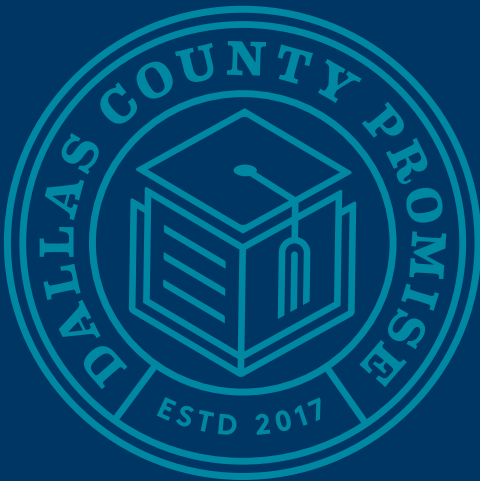
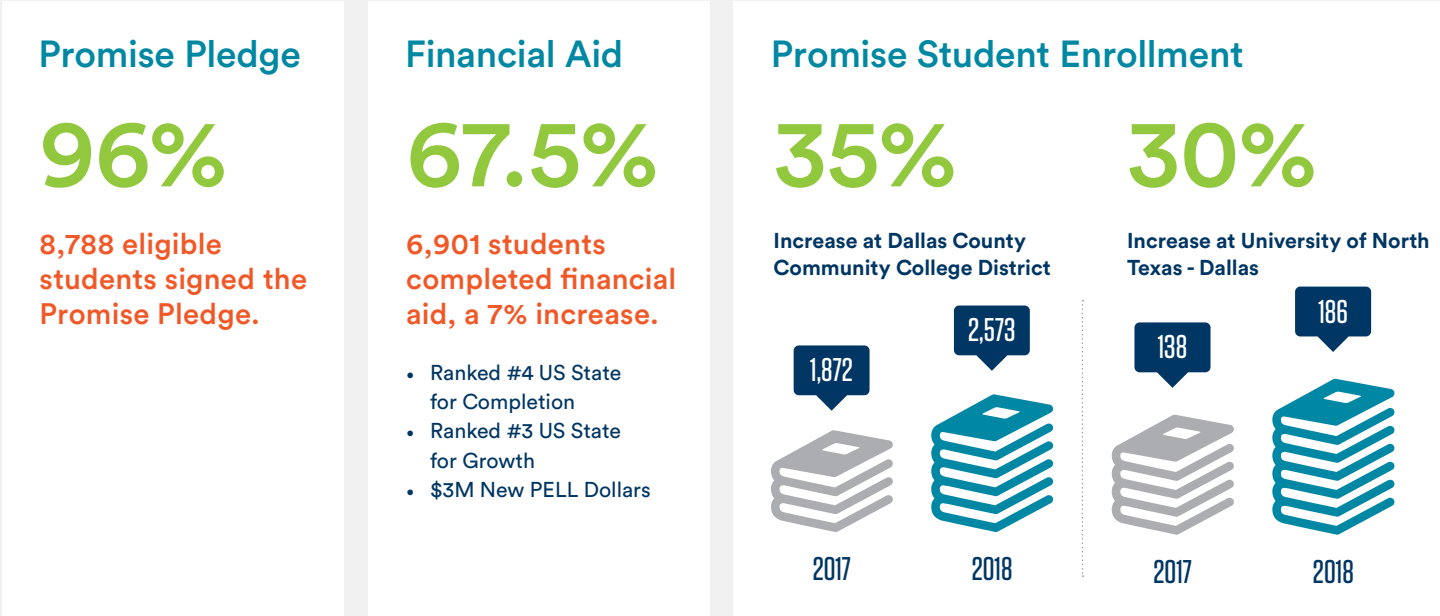




# Dallas County Promise

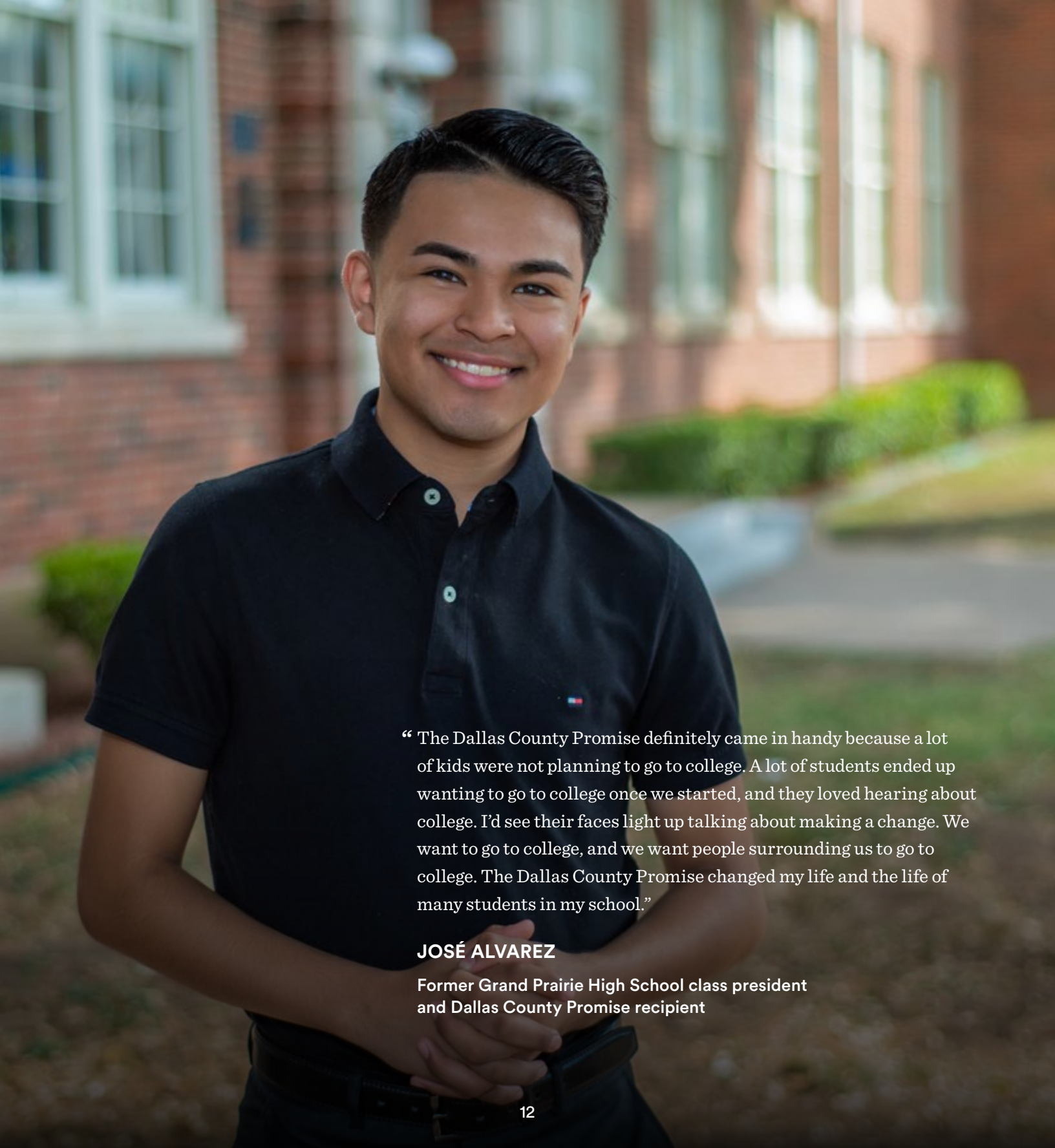
**Promise Results: Year One**

Across 31 high-poverty high schools in Dallas County



The Dallas County Promise is a transformational effort between school districts, colleges, universities, workforce partners, and community members to increase college completion. At the core, the Promise is a scholarship from the Dallas County Community College Foundation in partnership with matching university scholarships, including University of North Texas at Dallas, Southern Methodist University, Texas A&M Commerce, Midwestern State University, and an increasing number of universities. All participating students have not only an affordable path to college completion, but access to a Success Coach to support them in effectively managing the college process.

[DallasCountyPromise.org](https://DallasCountyPromise.org)



“ The Dallas County Promise definitely came in handy because a lot of kids were not planning to go to college. A lot of students ended up wanting to go to college once we started, and they loved hearing about college. I’d see their faces light up talking about making a change. We want to go to college, and we want people surrounding us to go to college. The Dallas County Promise changed my life and the life of many students in my school.”

**JOSÉ ALVAREZ**  
Former Grand Prairie High School class president  
and Dallas County Promise recipient



## PRIORITY AREA

# Advocacy

Creating systemic impact for students requires work beyond Dallas County. The Commit Partnership has a team of in-house staff members dedicated to advocating for student-focused public policy on local school boards and throughout the state, including inside the Texas Capitol.

## School Finance

In 2018, Commit CEO Todd Williams served on the Texas Commission on Public School Finance and helped craft a comprehensive set of recommendations focusing on improving key academic outcomes through strategic investment and increased equity in our public school finance system. The Advocacy team is dedicated to championing these recommendations during the 2019 Legislative Session.

## Early Education

The Advocacy team, on behalf of our Early Matters partners, seeks to increase awareness of the importance of early childhood education and expand access to high-quality early learning environments for all Texas students. The goal is to ensure that 80% of students are school-ready on the first day of kindergarten and 60% of third graders are meeting grade-level reading expectations.

## Effective Educators

The Advocacy team, in partnership with the Best in Class coalition, focuses on increasing access to well-prepared, effective, and diverse educators so that a greater proportion of our region's students are on track for college and career success. The efforts center on four strategic parts of an educator's pathway: attracting, preparing, developing, and retaining effective educators.





Commit  
Core Team

Laura Abadiano  
Erica Adams  
Marie Appel  
Eric Ban  
Kendra Boyle  
Briana Carter  
Kathleen Deforest  
Roberto Delgado  
Sagar Desai  
Elizabeth Dodson  
Phillip Fabian  
Jonathan Feinstein  
Mark Flanagan  
Asenath Francis  
Karla García  
Kate Greer  
Ana Hernandez  
Chantel Hobbs  
Chris Hudgens  
Carla Israel  
Chelsea Jeffery  
Sarah Jensen  
Kai Jones  
Ashwina Kirpalani  
Joshua Kumler  
Ryanne Legrand  
Kimberly Manns  
Abby Mayer  
Libby McCabe  
Dominique McCain  
Brittany Meyer  
Kathryn Mikeska  
Skiler Miller  
Brenda Molina  
Ann Monroe  
Erik Moss  
Stephanie Nixon  
Erica Ogboenyiya  
Jennifer Richardson  
Rob Shearer  
Dottie Smith  
Amani Thomas  
Treasure Washington  
Todd Williams  
Michael Wood

Board of  
Directors

Nicole Anderson  
Gerald Britt  
Regen Fearon  
Robert Kaplan  
Libby McCabe  
Dale Petroskey  
Matthew Randazzo  
Mark Rohr  
Jennifer Sampson  
Jeremy Smith  
Dolores Sosa Green  
George Tang  
Florencia Velasco-Fortner  
Todd Williams  
Ellen Wood

Leadership  
Council

Patricia Arvanitis  
Peter Balyta  
Peter Beck  
Yasmin Bhatia  
Lew Blackburn  
Michele Bobadilla  
Mary Brumbach  
Bobby Burns  
Robert Chereck  
Brent Christopher  
Kelly Compton  
Bruce Esterline  
Angela Farley  
Carine Feyten  
John Gasko  
Kenneth Gilbert  
Charles Glover  
Scott Griggs  
Christina Hanger  
Patrick Haugh  
Jerry Hawkins  
Michael Hinojosa  
Margaret Hirsch  
Stacey Hodge  
Susan Hoff

Richard Holt  
Michael Horne  
Susan Hull  
Lee Jackson  
Mary Jalonick  
Larry James  
Whitcomb Johnstone  
Michelle Kinder  
Stephanie Knight  
Laurie Larrea  
Ben Leal  
Tori Mannes  
Cheryl McCarver  
Tanya McDonald  
Linda McMahon  
Bob Mong  
Anne Motsenbocker  
Regina Nippert  
Alfreda Norman  
Dawson Orr  
Scott Orr  
Jose Parra  
J. Puckett  
Mike Rawlings  
Eric Reeves  
Byron Sanders  
Dave Scullin  
Nicole Small  
Ken Smith  
Marc Smith  
Michael Sorrell  
Aleta Stampley  
Jeannie Stone  
Martha Stowe  
Gordon Taylor  
Anne Thomas  
Tom Trigg  
Paula Turicchi  
David Vroonland  
Abigail Williams  
Cary Wright  
Cynthia Yung

Partners

**BUSINESS**  
Alliance Data  
AT&T  
Bain & Co.  
Bank of America  
The Beck Group  
Boston Consulting Group  
Capital One  
Citibank  
Comerica  
Dallas Citizens Council  
Dallas Mayor Mike Rawlings  
Dallas Regional Chamber  
Ernst & Young  
EverFi Fidelity Investments  
Fossil Group  
GE Capital  
Granite Properties  
Greater Dallas Hispanic Chamber  
Istation  
JPMorgan Chase  
LIT OnLine  
North Dallas Chamber  
Ready to Work  
The Real Estate Council  
Signazon.com  
Texas Instruments  
Univision  
Workforce Solutions Greater Dallas

**EARLY CHILDHOOD**  
ChildCare Group  
Dallas Early Education Alliance  
Educational First Steps  
Head Start of Greater Dallas  
Mi Escuelita Preschool  
Zero to Five Funders Collaborative

**FOUNDATIONS**  
AT&T Foundation  
Boone Family Foundation  
Communities Foundation of Texas  
The Dallas Foundation  
Fidelity Foundation  
The Hamels Foundation

The Hoglund Foundation  
General Electric (GE) Foundation  
JP Morgan Chase Foundation  
Carl B. and Florence E. King Foundation  
Eugene McDermott Foundation  
Meadows Foundation  
Rainwater Charitable Foundation  
Harold Simmons Foundation  
Texas Instruments Foundation  
Vickery Meadows Youth Development Foundation  
United Way of Metropolitan Dallas  
Williams Family Foundation  
Woodrow Wilson High School  
Community Foundation  
W.W. Caruth, Jr. Foundation  
George & Fay Young Foundation  
Young Women's Preparatory Network

**HIGHER EDUCATION**  
Austin College  
Dallas County Community Colleges  
Parker University  
Paul Quinn College  
Relay Graduate School of Education  
Southern Methodist University  
STARS Program - UT Southwestern  
Medial Center at Dallas  
Texas A&M University - Commerce  
University of Texas - Dallas  
University of Dallas  
University of N. Texas - Dallas  
University of N. Texas - Denton  
University of Texas at Arlington  
Texas Women's University

**K-12 EDUCATION**  
Alcuin School: A Montessori and IB Education  
Bishop Dunne Catholic School  
Carrollton-Farmers Branch ISD  
Cedar Hill ISD  
Coppell ISD  
Cristo Rey

Dallas ISD  
DeSoto ISD  
Duncanville ISD  
Episcopal School of Dallas  
Garland ISD  
Good Shepherd Episcopal School  
Grand Prairie ISD  
Great Hearts Academy  
Greenhill School  
Harmony Schools  
Highland Park ISD  
The Hockaday School  
International Leadership of Texas  
Irving ISD  
Jesuit College Preparatory  
KIPP DFW  
The Lamplighter School  
Lancaster ISD  
Mesquite ISD  
Momentous Institute  
Parish Episcopal School  
Plano ISD  
Responsive Education Solutions  
Richardson ISD  
Shelton School  
St. Mark's School of Texas  
Texas CAN Academies  
Trinity Basin Prep  
Uplift Education  
Village Tech Schools  
The Winston School

**NON-PROFIT**  
Aberg Center For Literacy  
Academic Success Program  
Admission Aid  
After the Bell Alliance  
After-School All-Stars North Texas  
Behind Every Door  
Big Brothers Big Sisters Lone Star  
Big Thought  
Bold Idea  
Boys & Girls Club of Greater Dallas  
Bryan's House  
Camp Fire Lone Star  
Caring Loving All Youth (CLAY)

Catch Up and Read  
Catholic Charities of Dallas, Inc.  
Children At Risk  
Children's Health  
CitySquare  
City Year  
Commemorative Air Force  
Communities In Schools  
Dallas After School  
Dallas Arboretum and Botanical Garden  
Dallas Children's Theater  
Dallas Community Fellowship Center  
Dallas Public Library  
Dallas Symphony Orchestra  
Dallas Urban Debate Alliance  
Dogwood Canyon Audobon Center  
Dove Christian Fellowship International  
Educate Texas  
Education is Freedom  
Education Opens Doors  
Education Pioneers  
Empower American Children  
Empowering Oak Cliff  
First Three Years  
Foundation for C.H.O.I.C.E.  
Friends of MLK  
Friends of Wednesday's Child  
Girl Scouts of Northeast Texas  
Granny's Place Ministries  
Holistic Education Institute  
IGNITE  
Jubilee Park & Community Center  
Junior Achievement  
Junior League of Dallas  
Junior Players  
Just Say YES  
Kids-U  
Leadership ISD  
Lemonade Day  
Literacy Instruction For Texas  
Mercy Street  
The Mission Continues  
NAPE (National Alliance for Partnerships in Equity)  
National Math & Science Initiative

New Horizons of North Texas  
NHP Foundation  
North Central Texas Interlink  
North Texas Alliance to Reduce Teen Pregnancy  
Parents Step Ahead  
Perot Museum of Nature and Science  
The Princeton Review Dallas  
Project Transformation  
Promising Youth Alliance  
Rainbow Days  
Readers 2 Leaders  
Reading Partners  
REAL School Gardens  
Reasoning Mind  
Scholarshot  
Serve West Dallas  
SkillQuest  
SMU's CCE - The School Zone  
Stand for Children  
Teach for America DFW  
Teaching Trust  
TeCo Theatrical Productions  
Texas PTA  
TexProtects  
Trinity River Audobon Center  
Trinity River Mission  
TutorMate  
Unite  
Unlocking Doors  
Victims Outreach  
Wesley Rankin Community Center  
West Dallas Community Centers  
WINGS Dallas  
YMCA of Metropolitan Dallas  
  
**PARENT & TEACHER GROUPS**  
Avance Dallas  
The Concilio  
Region 10 Education Service Center  
Stand for Children  
Teach for America DFW  
Teaching Trust  
Texas PTA



Major Investors of 2018

CORPORATIONS & FOUNDATIONS

Anonymous	Fluor Foundation
Ashford Hospitality Advisors	Gary Community Investments
AT&T Foundation	Bill & Melinda Gates Foundation
Austin Community Foundation	Highland Capital Management
Elizabeth & Henry (Peter) Beck Fund at the Dallas Foundation	Lyda Hill Foundation
Bezalel Fund at VCEP	Hirsch Family Foundation
Byrne Family Foundation	Hoblitzelle Foundation
Capital One	Hoglund Foundation
Communities Foundation of Texas	IBM Corporation
Dallas Citizens Council	JCI Creatives
Dallas County Community College District Foundation	JPMorgan Chase Foundation
The Dallas Foundation	W.K. Kellogg Foundation
Dallas Regional Chamber	Leadership for Educational Equity
DTLR, Inc.	Liberty Mutual Foundation
Educate Texas	W.P. & Bulah Luse Foundation
Esping Family Foundation	Eugene McDermott Foundation
Fidelity Foundation	McNarosa Fund of CFT
	The Meadows Foundation
	The Melchizedek Fund of CFT
	Microsoft

David B. Miller Family Foundation
Mike A. Myers Foundation
North Texas Community Foundation
PNC Bank
Rainwater Charitable Foundation
The Real Estate Council
Rees-Jones Foundation
Rosewood Foundation
The Sealark Foundation
Simmons Sisters Fund at the Dallas Foundation
State Fair of Texas
StriveTogether
Roy & Christine Sturgis Charitable Trust
Texas Instruments Foundation
Texas Women’s Foundation
United Way of Metropolitan Dallas
Wells Fargo
Todd & Abby Williams Family Foundation

INDIVIDUALS & FAMILIES

Bill & Lydia Addy
Michael & Jill Dardick
Steve & Sharon Folsom
Mary Hager
Jay Henry
Robert S. Kaplan
Jack Lowe
Libby & Murray McCabe
Casey & Megan McManemin
Jon & Jennifer Mosle
Anne Raymond
Deedie Rose
Jaime & Margaret Spellings
David Wallenstein
Jack Wensinger
Ellen Wood



Footnotes

**1 Pre-K Enrollment:** Texas Education Agency - Texas Public Education Information – Texas Pre-Kindergarten Report: [texaseducationinfo.org](http://texaseducationinfo.org)

**2 Texas Kindergarten Readiness Report:** Texas Education Agency - Texas Public Education Information – Texas Pre-Kindergarten Report: [texaseducationinfo.org](http://texaseducationinfo.org).

The Kindergarten Ready metric calculation is a change from previous years. TEA made available statewide data and from this year forward the Kindergarten Ready metric will use the TEA Kindergarten Ready statewide report.

**3 STAAR Indicators:** Texas Education Agency – 2012-2018 STAAR Aggregate Data at the “meets” standard. [tea.texas.gov/student.assessment/staar/aggregate](http://tea.texas.gov/student.assessment/staar/aggregate)

**4 College Ready:** The percent of students who graduated from high school in 2017, who took the SAT or ACT, and who scored at least a 24 on the ACT or 1110 on the SAT (reading and math). Per the Texas Education Agency Texas Academic Performance Reports. Scores of at least a 24 on the ACT and 1110 on the SAT translate to a high likelihood of receiving a B- or C+ grade or better in higher education.

**5 Graduation Rate:** Per the Texas Education Agency Texas Academic Performance Reports. The percent of the 9th grade cohort from the 2013-2014 school year that graduated four years later in 2017.

**U.S. Census Bureau:** 2013-2017 American Community Survey 5-year Estimate

**TEA 2018 Accountability Ratings:** Campuses rated 90 or above are an A, Campuses rated 80-89 are a B, Campuses rated 70-79 are a C, Campuses rated 60-69 are a D, and Campuses rated below 60 are an F.

**2018 TEA TAPR Reports.** In order to be college-ready, students must score at least an 1110 on SAT or 24 on ACT.

**6 Postsecondary Enrollment:** The percent of students who graduated from high school in 2017 and enrolled in a postsecondary institution within one year after graduation. Fall 2018 National Student Clearinghouse Reports provided by Carrollton-Farmers Branch, Dallas, DeSoto, Garland, Grand Prairie, Highland Park, Irving, Lancaster, Mesquite, Richardson, and Uplift Education.

**7 Postsecondary 1st Year Persistence:** The percent of students who graduated from high school in 2016, enrolled in a postsecondary institution within one year after graduation and enrolled for a second year. Fall 2018 National Student Clearinghouse Reports provided by Carrollton-Farmers Branch, Dallas, DeSoto, Garland, Grand Prairie, Highland Park, Irving, Lancaster, Mesquite, Richardson, and Uplift Education.

**8 Postsecondary Completion:** The percent of students who graduated from high school in 2012 and obtained a postsecondary degree six years after high school graduation. Fall 2018 National Student Clearinghouse Reports provided by Carrollton-Farmers Branch, Dallas, DeSoto, Garland, Grand Prairie, Highland Park, Irving, Mesquite, Richardson, and Uplift Education.

**9 United States Census Bureau, American FactFinder:** 2017 5-year American Community Survey. U.S. Census Bureau’s American Community Survey Office.

**10 TEA 2018 Accountability Ratings:** The 85th Texas Legislature (2017) mandated that districts and campuses be evaluated with an A-F grade. Districts/Campuses rated 90 or above are an A, districts/campuses rated 80-89 are a B, districts/campuses rated 70-79 are a C, districts/campuses rated 60-69 are a D, and districts/campuses rated below 60 are an F. [tea.texas.gov/2018accountability.aspx](http://tea.texas.gov/2018accountability.aspx)

**Thank you to Elliott Muñoz for his great photography of Dallas County students and schools.**

The Commit Partnership would like to thank the following districts for providing data for various indicators and other metrics to assist the community in understanding where all of our students are academically:

Carrollton-Farmers Branch ISD	Highland Park ISD
Cedar Hill ISD	Irving ISD
Dallas ISD	Lancaster ISD
DeSoto ISD	Mesquite ISD
Garland ISD	Richardson ISD
Grand Prairie ISD	Uplift Education

In Kind Supporters:

Alteryx
Bain & Co.
Boston Consulting Group
College Football Playoff Foundation
Dallas Mavericks Foundation
DataKind
Libby McCabe
McKinsey & Company
Microsoft
Salesforce.org
Tableau
Todd & Abby Williams Family Foundation





**THE COMMIT PARTNERSHIP**  
IS A COMMUNITY NAVIGATOR  
AND CONNECTOR, WORKING TO  
ENSURE THAT ALL DFW STUDENTS  
RECEIVE AN EXCELLENT AND  
EQUITABLE EDUCATION THAT  
PREPARES THEM TO FLOURISH IN  
COLLEGE AND CAREER.



### Reach Us

3800 Maple Avenue  
Suite 800  
Dallas, TX 75219

[CommitPartnership.org](http://CommitPartnership.org)

[f](#) [t](#) [i](#) [v](#) /Commit2Dallas